



FUSED SPUR INSTRUCTION MANUAL

INSTALLATION WARNINGS: BEFORE COMMENCING INSTALLATION ISOLATE YOUR MAINS ELECTRIC SUPPLY

Read the instructions care fully before starting the installation process and keep them for future reference. This product must be installed by a qualified electrician. This product should be installed in accordance with the relevant sections of the building regulations code, and the current edition of the IEE Wiring Regulations (BS 7671:Requirements for electrical installations) and appropriate statutory regulations.

Do not exceed the Maximum Power Rating:
RATING 13A VOLTAGE 250V~
BS 1363/4 CE CERTIFIED
PATENT PENDING

INSTALLATION

Remove the glass panel




Using a flat screwdriver. Insert the screw driver in the location notch on the bottom of the cover and twist to unclip the cover.

Wiring

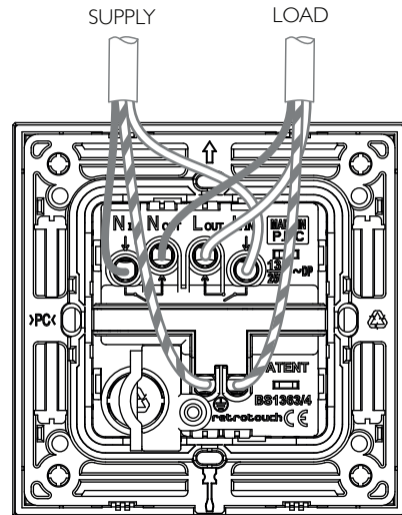
Wire as shown in the diagram. Push wires firmly into terminals and tighten terminal screws so that wires are held securely. No bare wires should protrude from the terminals. Ensure correct wires are connect to the correct terminals, if incorrectly wired, this could damage the product.

Wire identification - Twin & Earth Cable

As from 1st April 2004 new colour codes for hard wire installations was introduced.

-  **EARTH** = Green/Yellow Sleeving
-  **NEUTRAL** = Black (pre Apr 04) / Blue (After Apr 04)
-  **LIVE** = Red (Pre Apr 04 / Brown (After Apr 04)

To prevent fire hazard always use correct rating cable, size & type for the application.



Fix screws:

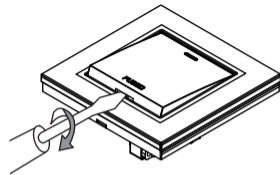
Use the screws supplied to attach the unit to backbox using a flat head screwdriver

Reattach the glass panel:

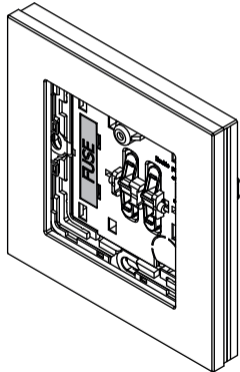
Align the glass panel at the top edge (A) of the fused spur and firmly push at the base (B) to click in to place.

Changing the fuse

With the switch in the OFF position the button removal slot will be visible at the base of the button. Insert a screwdriver in the notch then twist and lift to unclip the button to access the fuse. Use a flat head screwdriver to open the fuse holder.

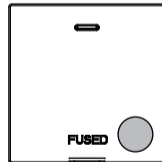
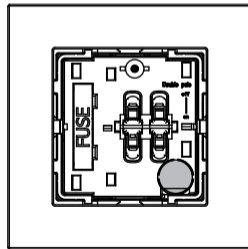


INSERT AND TWIST
BASE OF BUTTON TO
REVEAL HIDDEN FUSE



Optional Flex outlet

Punch out the highlighted plastic sections on the base and the button cover. Insert the load cable first before wiring and tighten across outer sheath of cable using the cable clamp on the back of the fused spur.



GUARANTEE

10 year Guarantee (from date of purchase). Please keep proof of purchase.

If any of our products become faulty within this 1 year period, please contact us. Please send product/s by recorded post, as proof of dispatch as we cannot be held liable for products lost in the post. If the product is found to be faulty, a replacement shall be sent within 7 working days from date received. In all cases, an identical replacement shall be sent, however, if the product has been discontinued a suitable alternative shall be sent with the same or similar specification.

TEL: 01293 279 426
SALES@RETROTOUCH.CO.UK
WWW.RETROTOUCH.CO.UK

